

# Chelsea® 852 Series

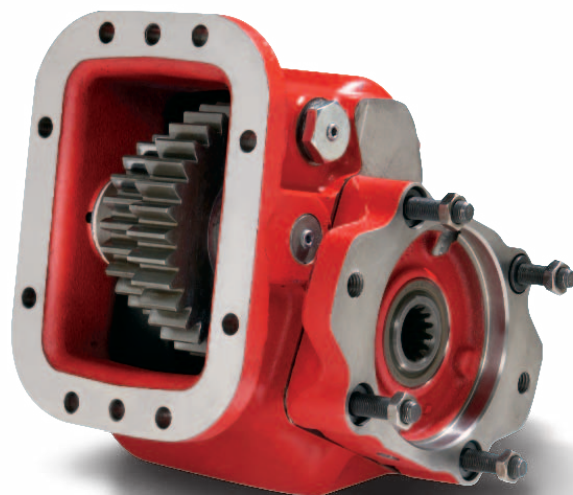
Heavy Duty 8-Bolt Powershift P.T.O.



## Overview:

The Chelsea 852 P.T.O. is another example of why Chelsea P.T.O. technology is the best in the business. This 8-Bolt Powershift is the workhorse of the Chelsea P.T.O. line. It features a cast iron housing and heavy duty ball bearings on the output shaft, along with the large clutch pack to provide you with a torque rating up to 500 Lbs. ft. and a long service life in heavy duty applications. Three output options, three internal speed ratios and three shift options make this one versatile P.T.O. Take advantage of over 65 years of Chelsea P.T.O. technology to increase performance and lower costs.

- Oil Field Application
- Bulk Transporter Trucks
- Fire and Rescue



## Product Features and Benefits:

### Contact Information:

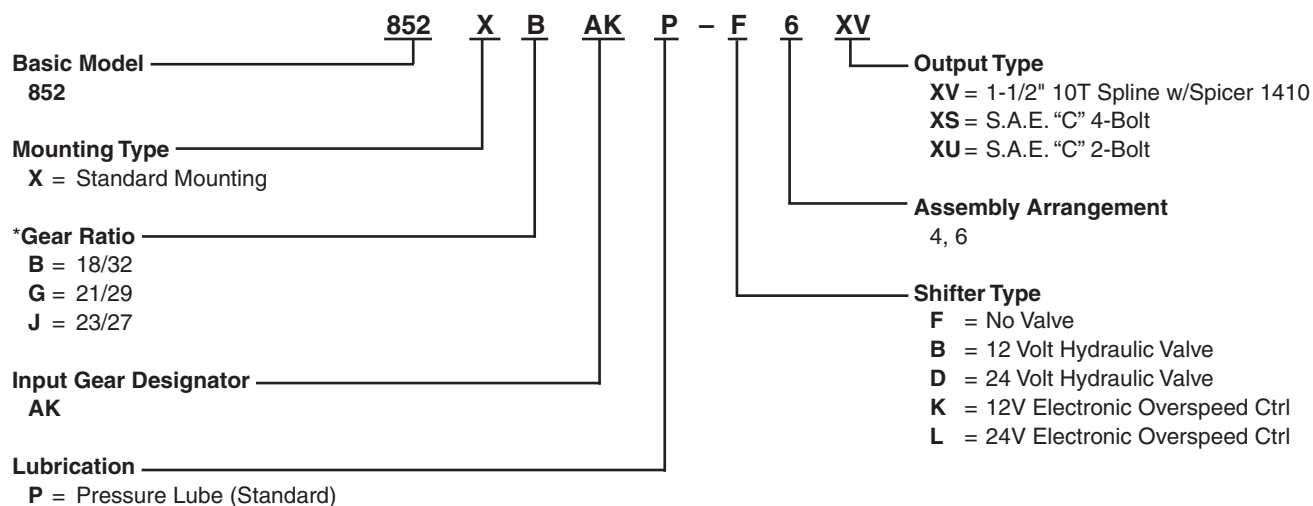
Parker Hannifin Corporation  
**Chelsea Products Division**  
8225 Hacks Cross Road  
Olive Branch, MS 38654 USA

- Designed for heavy duty applications
- Three speed ratios to choose from
- Pump flanges to fit most popular hydraulic pumps
- Pressure lubrication standard
- Intermittent Torque Rating of 500 Lbs. ft.
- Two Year Warranty

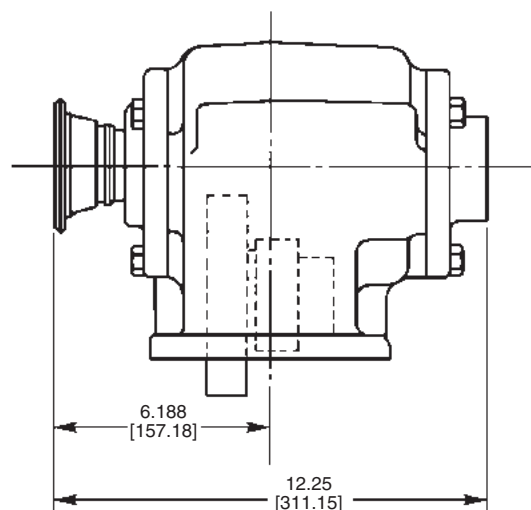
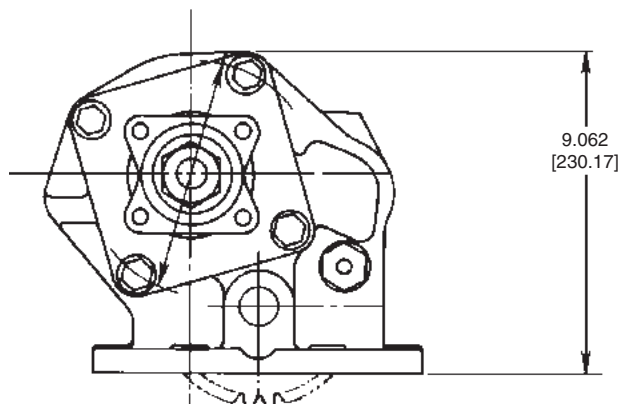


ENGINEERING YOUR SUCCESS.

## Model Number Designator



**NOTE:** \*Internal P.T.O. Gears - P.T.O. Ratio Gear/P.T.O. Output Gear



## Series Specifications Chart – 852 Series

	852*B, G, J
Standard Output Shaft Size	—— 1-1/2" 10 spline w/1410 flange ——
Intermittent Torque Rating (Lbs. ft.)	500
Intermittent Torque Rating (N.m.)	678
Horsepower Rating for Intermittent Service	
At 500 R.P.M. of Output Shaft (HP)	48
At 1000 R.P.M. of Output Shaft (HP)	95
At 500 R.P.M. of Output Shaft (Kw)	36
At 1000 R.P.M. of Output Shaft (Kw)	71
Approximate Weight:	—— 88 lbs. [40 kg] ——

© 2012 Parker Hannifin Corporation

Supercedes HY25-0108-B1/US June 2010

HY25-0108-B1/US February 2012



ENGINEERING YOUR SUCCESS.